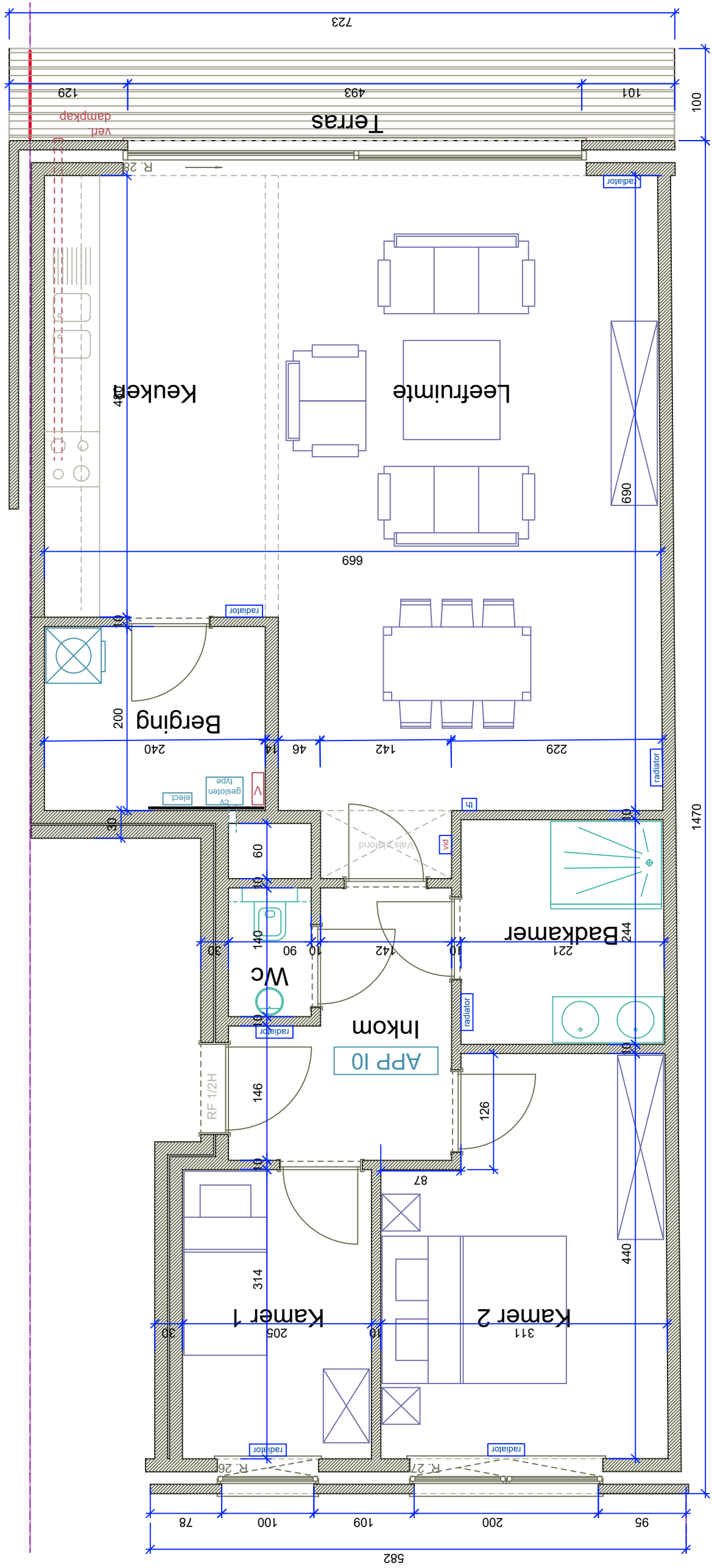


| OPPERVLAKTES |                       |
|--------------|-----------------------|
| Appartement  | 92.15 m <sup>2</sup>  |
| Terras       | 21.69 m <sup>2</sup>  |
| Kelder       | 3.51 m <sup>2</sup>   |
| Parking      | 18.34 m <sup>2</sup>  |
| TOTAAL       | 135.69 m <sup>2</sup> |



**TRAWOBO INVEST**

EDGARD TINELSTRAAT 18 BUS 1 - SINT-LIEVENS-HOUTEM <http://www.trawobo-invest.be> info@trawobo-invest.be

Gregory: 0499 36 17 83  
Shanaï: 0472 76 10 41

**RESIDENTIE VIK**

App. 10 - Kelder nr 17 - Parking nr 1  
Hoek brusselsesteenweg / Hofkwartier  
Meerbeke 9402

DATUM: 09/08/2017      FORMAAT A3 - SCHAAL 1:50      PLAN NR 1/1